

KTP-4 KTP-4A KTP-5

Transport Platforms

NEW options to transport crews and materials to precisely where you need them!

Klimer's expanded line of mast-climbing transport platforms provides economic, safe and versatile options for a variety of job-site requirements.

With no need for a dedicated operator, these transport platforms are ideal for heights from 30 to 150 feet – 10 to 45 m (3 to 15 floors) as a cost-effective alternative or complement to hoists.

Klimer's transport platforms feature a spacious platform surface matched with one of three proven climbing systems, driven by self-contained gas or electric power units. Single or dual cars available.



Simple, easy-to-operate control systems and variable speed options.

Raise your expectations!

MODEL: **KTP-4** **KTP-4A** **KTP-5**

Performance Specs:

Platform Size – Single Car	5 ft x 13 ft (1524 x 3962 mm)	5 ft x 13 ft (1524 x 3962 mm)	5 ft x 13 ft (1524 x 3962 mm)
Platform Size – Dual Car	Same as above (x2)	Same as above (x2)	Same as above (x2)
Drive System	KlimerLITE	Alimak	KPM-8
Capacity – Single Car	3,500 lbs (1590 kg) or 8 persons	3,300 lbs (1500 kg) or 8 persons	4,000 lbs (1815 kg) or 10 persons
Capacity – Dual Car	3,000 lbs (1360 kg) or 7 persons	2,800 lbs (1270 kg) or 8 persons	4,000 lbs (1815 kg) or 10 persons
Vertical Travel Speed	Variable 0 - 39 ft (0 - 12 m) per minute	26 ft (8 m) per minute	Variable 0 - 30 ft (0 - 9 m) per minute
Maximum Freestanding Height	40 ft (12 m)	72 ft (22 m)	72 ft (22 m)
Maximum Anchored Height	330 ft (100 m+)	330 ft (100 m+)	330 ft (100 m+)
Mast Height Above Last Anchor	20 ft (6 m)	20 ft (6 m)	20 ft (6 m)
Lowest Platform Height	63" (1600 mm)	66" (1676 mm)	71" (1803 mm)

Component Sizes and Weights:

Platform Weight (includes rails & ramps)	2,083 lbs (947 kg)	2,083 lbs (947 kg)	2,581 lbs (1,173 kg)
Platform Length	156" (3,962.4 mm)	156" (3,962.4 mm)	156" (3,962.4 mm)
Platform Width	51.5" (1,308.1 mm)	51.5" (1,308.1 mm)	68" (1,727.2 mm)
Platform Ramp	51.5" w x 32" h (1,308.1 mm w x 812.8 mm h)	51.5" w x 32" h (1,308.1 mm w x 812.8 mm h)	66.5" w x 43" h (1,689.1 mm w x 1,092.2 mm h)
Mast Section Size	20" x 16" x 60" (508 x 406 x 1,524 mm)	28.5" x 28.5" x 60" (724 x 724 x 1,524 mm)	30" x 30" x 60" (762 x 762 x 1,524 mm)
Mast Section Weight	241 lbs (110 kg)	286.6 lbs (130 kg)	385 lbs (175 kg)
Shipping Height	83" (2,108 mm)	106" (2,692 mm)	112" (2,845 mm)
Drive Unit Weight (includes pedestal)	3,300 lbs (1,500 kg)	3,932 lbs (1,787 kg)	5,353 lbs (2,433 kg)
Counterweight	1,000 lbs (454 kg)	1,000 lbs (454 kg)	1,000 lbs (454 kg)
Optional Roof Size	156" L x 60" w x 8'6" H (3,962 x 1,524 x 2,590 mm)	156" L x 60" w x 8'6" H (3,962 x 1,524 x 2,590 mm)	156" L x 63" w x 8'6" H (3,962 x 1,600 x 2,590 mm)
Optional Roof Weight	300 lbs (136 kg)	300 lbs (136 kg)	300 lbs (136 kg)

IMPORTANT!

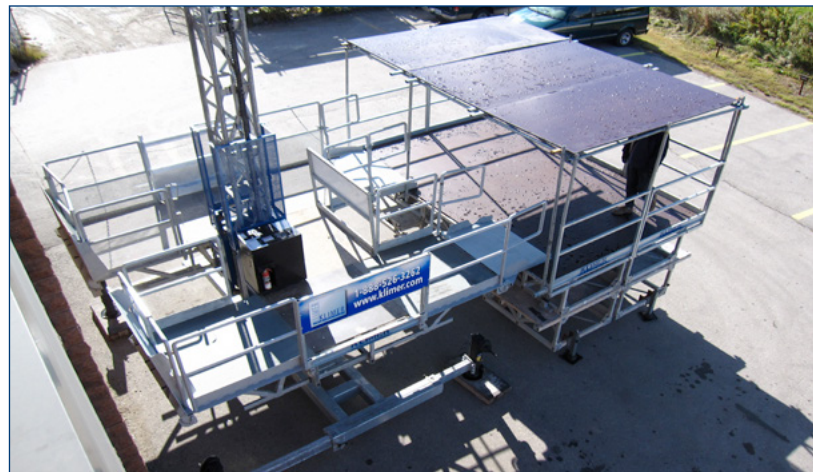
Study operator's manuals before use. Do not load above recommended safe working loads. For configurations not shown above, consult your local Klimer dealer or operator's manual. These products must be used in conformity with safe practice and applicable statutes, regulations, codes and ordinances. Specifications of products and equipment shown herein are subject to change without notice. E&OE.

What makes Klimer superior to other transport options?

Proven mobility and versatile configurations put your crews and materials to work faster.



Up to 72 ft freestanding on KTP-5 & KTP-4A. Up to 40 ft freestanding on KTP-4.



Alternative configurations available. Dual car shown with optional landing unit.



Two end ramps plus one removable side gate speed loading and off-loading.



Mechanical interlocks = less maintenance, greater safety.



CANADA – HEADQUARTERS

Klimer Platforms Inc.
7045 Auburn Rd, Milton, ON, Canada L9T 7V9
Call 1-888-526-3262 or 905-876-4063

CANADA – CALGARY

Klimer Platforms Inc.
4808 30th St, SE, Calgary AB T2B 2Z1
Call 1-888-526-3262 or 403-206-1446

U.S. – OHIO

Klimer Platforms, Ltd.
1712 Kimball Rd SE, Canton, OH 44707
Call 1-800-494-0496 or 330-409-8116

U.S. – NORTH CAROLINA

Klimer Platforms, Ltd.
225 Kress Venture Rd, China Grove, NC 28023
Call 1-800-494-0496 or 330-409-8116

info@klimer.com klimer.com

Visit us online at klimer.com to learn more about our mast-climbing work platforms and transport platforms.